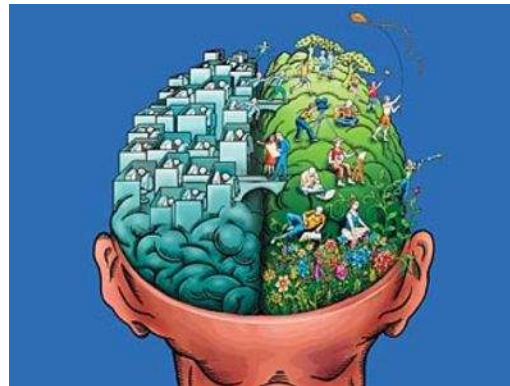


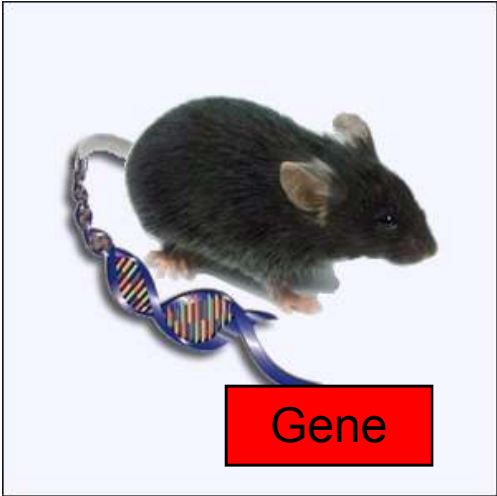
FROM INDIVIDUAL ENDOPHENOTYPES TO DYNAMIC INTERPLAY BETWEEN NEUROPSYCHIATRIC DOMAINS

Allan V Kalueff, PhD



ORNL, March 26, 2009

Current neurophenotyping strategies

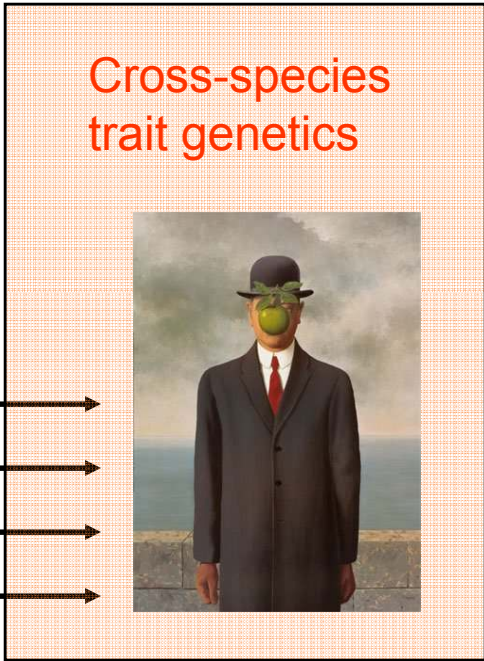


Environment

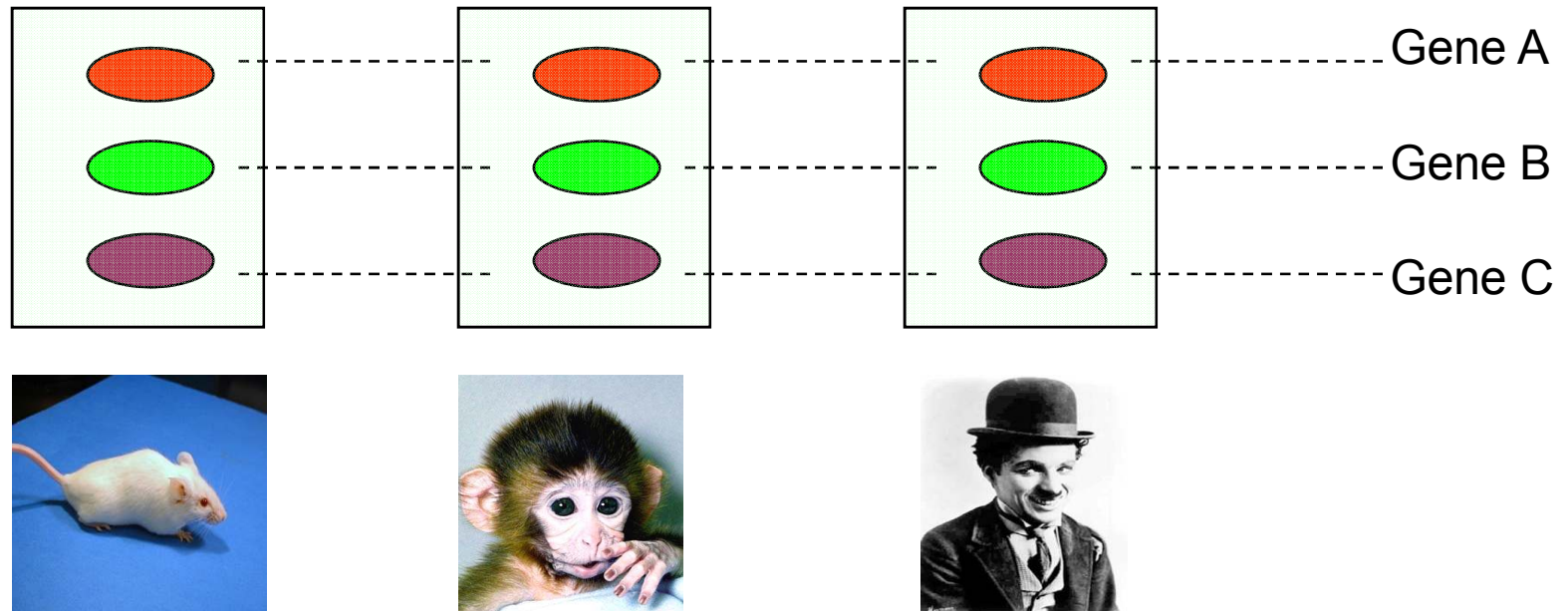


Behavior:
G x B
G x E

- Endophenotype 1
- Endophenotype 2
- ...
- Endophenotype n



Cross-species trait genetics

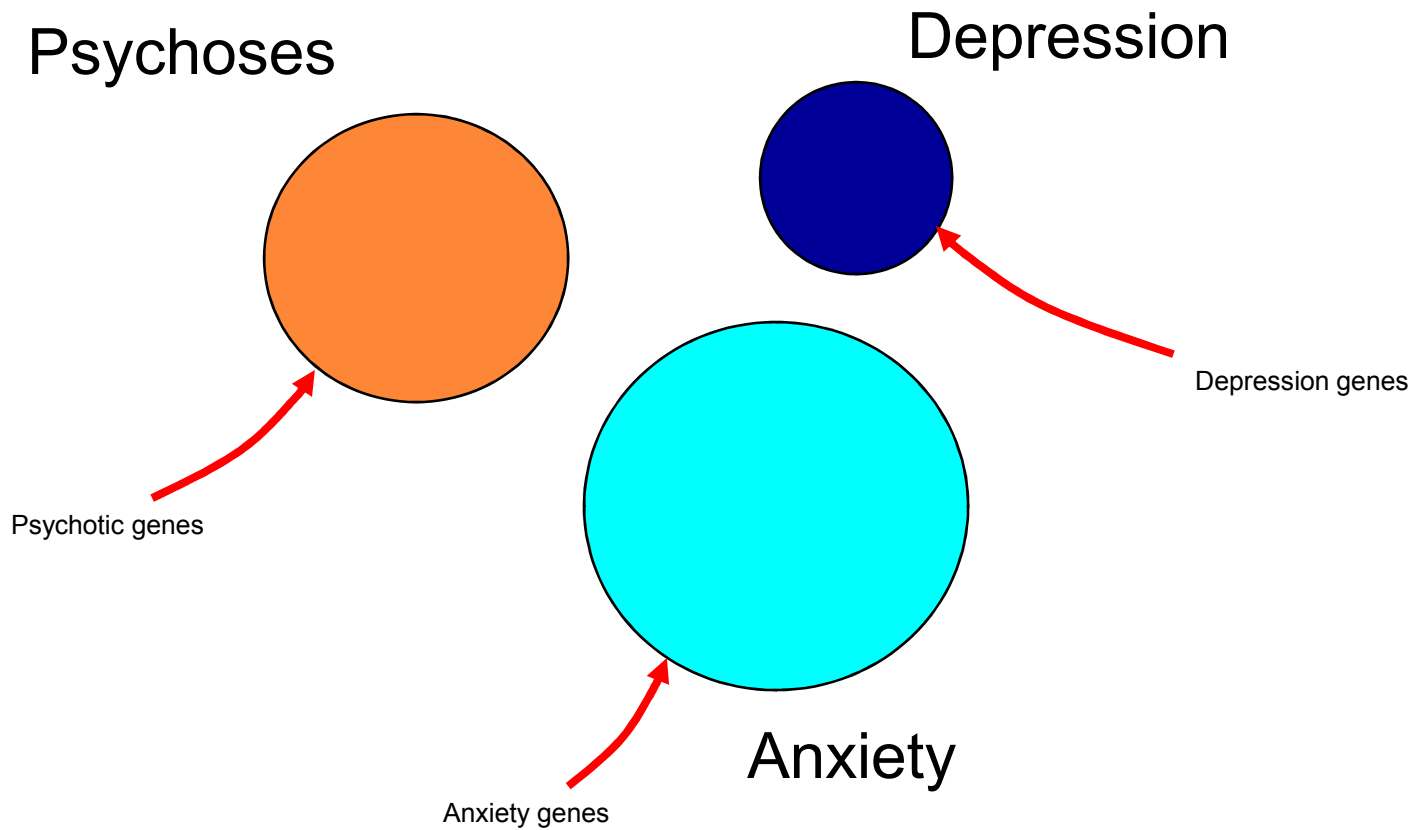


Pitfalls:

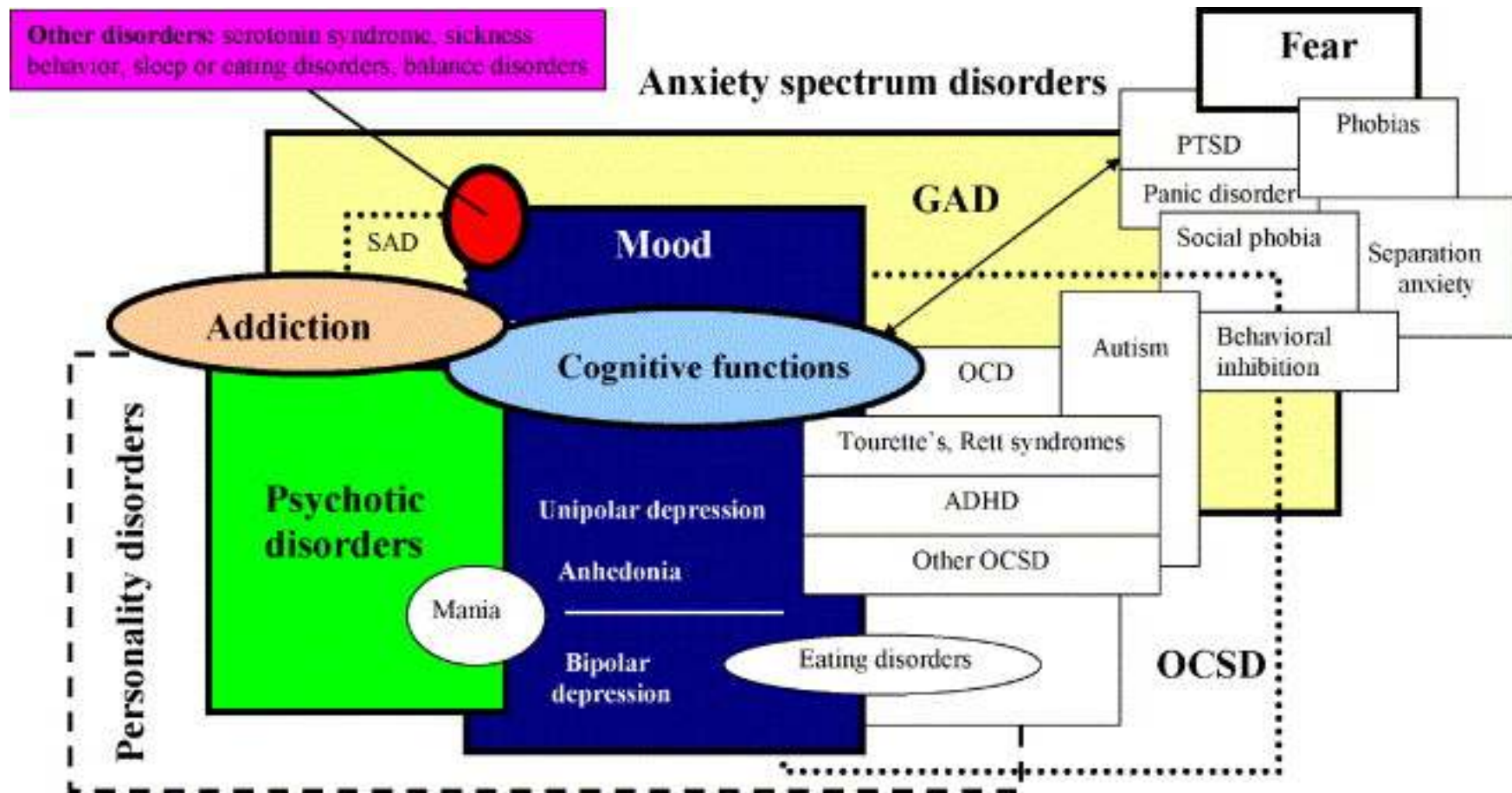
- Not all behaviors are analogous in mice and men
- Not all human endophenotypes are properly understood
- Not all genes are homologous in mice and men
- Disorder-related phenomena frequently overlap



“Ideal” psychiatry

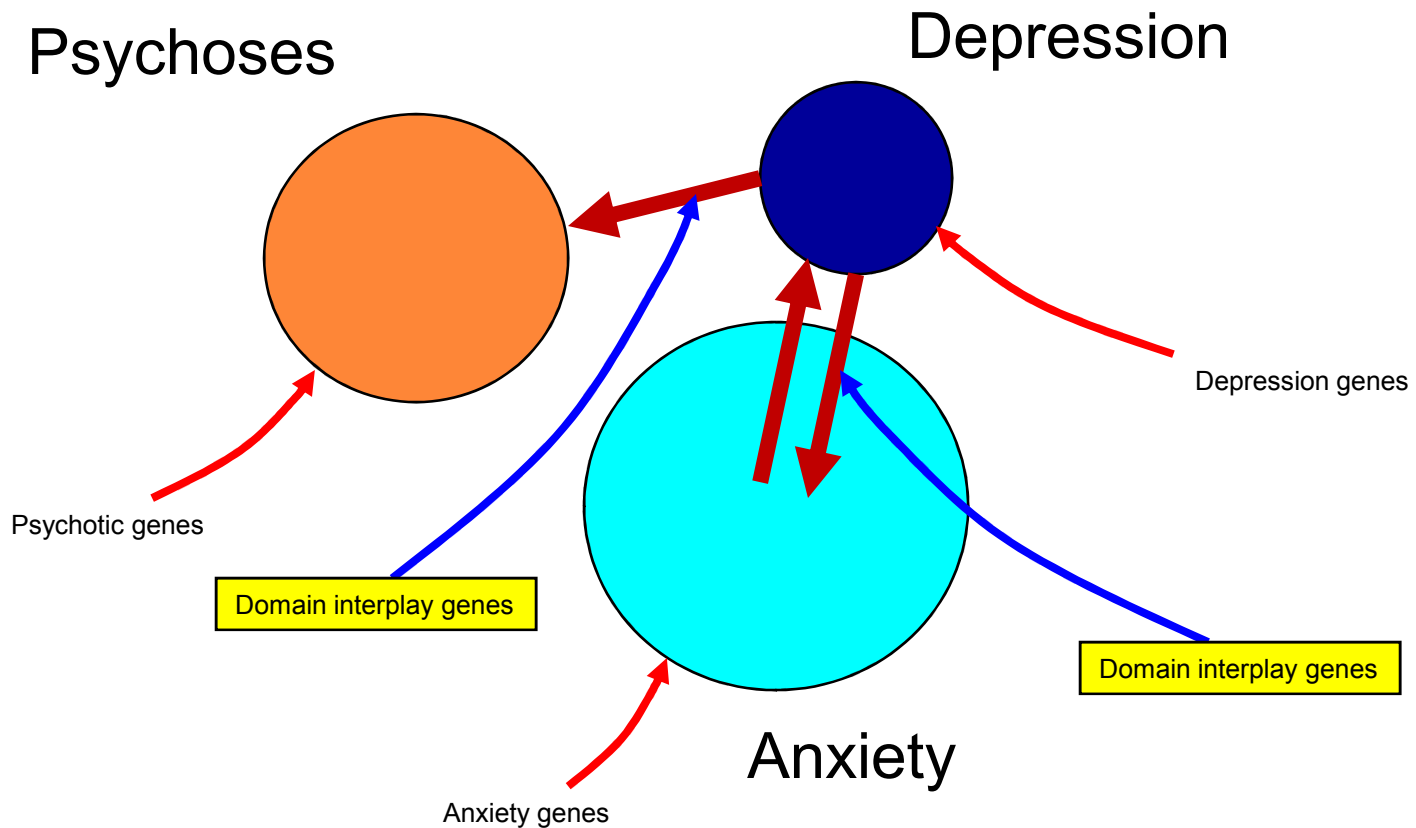


“Real” psychiatry: psychiatric spectra



From domain genetics to domain interplay genetics

Kalueff et al., 2008, Behav Brain Res; Laporte et al., 2009, Behav Pharmacol

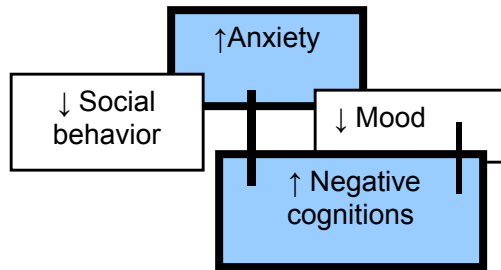


Domain interplay concept

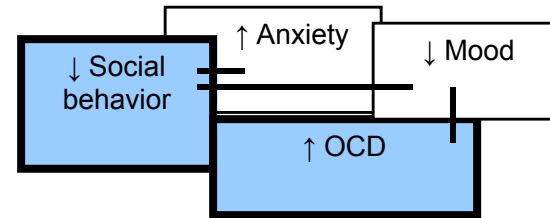
Kalueff et al., 2008, Behav Brain Res

Laporte et al., 2009, Behav Pharmacol

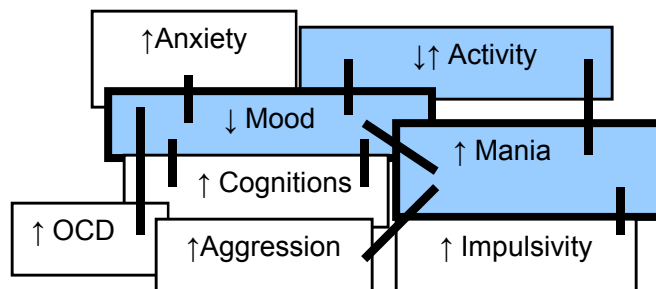
Post-traumatic stress disorder



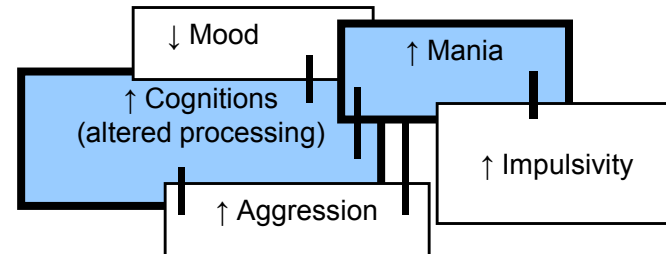
Autism



Bipolar depression



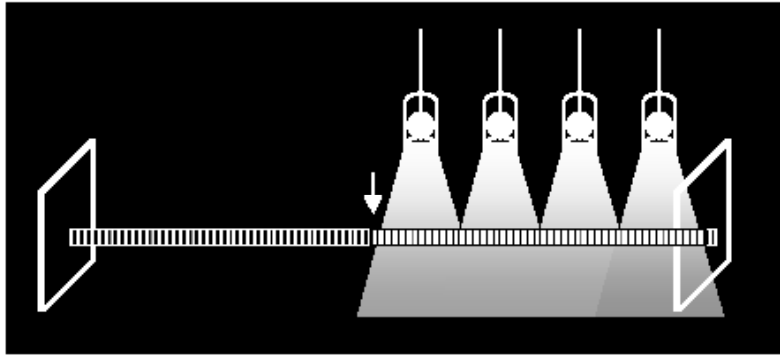
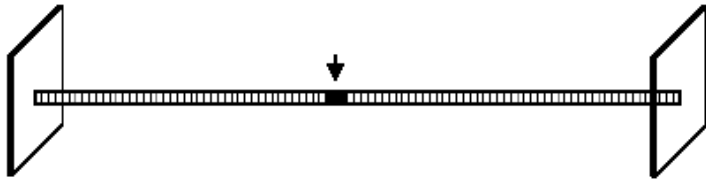
Schizophrenia



**We need new approaches
to modeling neuropsychiatric
disorders**



Creating new models of newly appreciated brain phenotypes

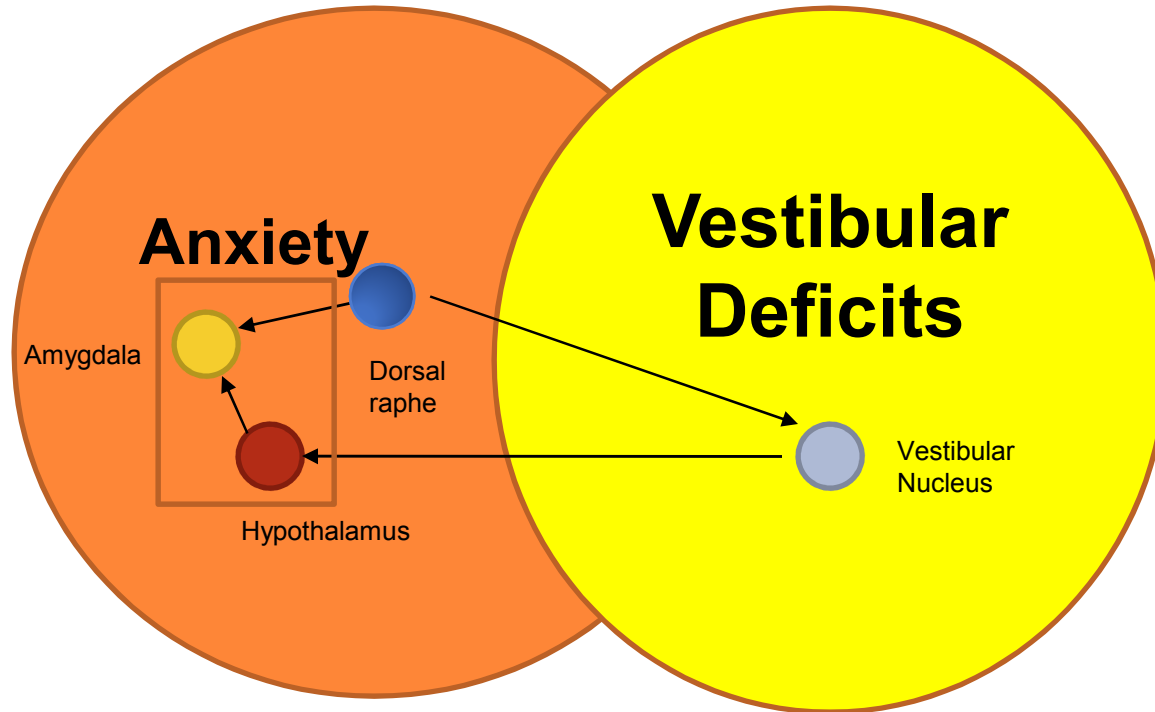


The rodent Suok (“ropewalking”) test

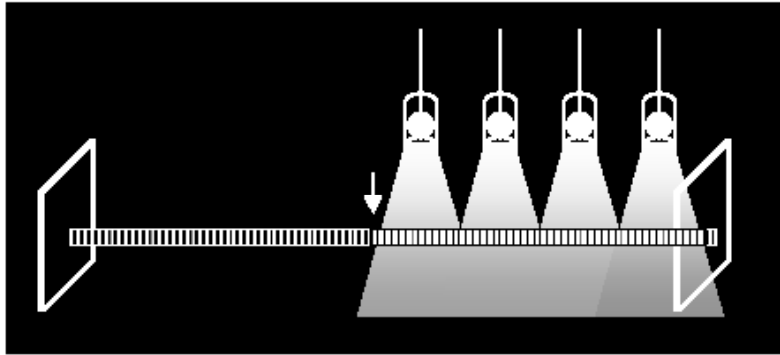
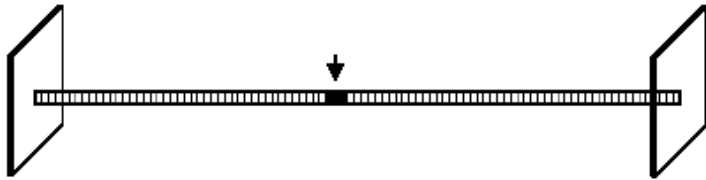
Kalueff et al., 2005



OVERLAPPING BRAIN PATHWAYS



Creating new models of newly appreciated brain phenotypes

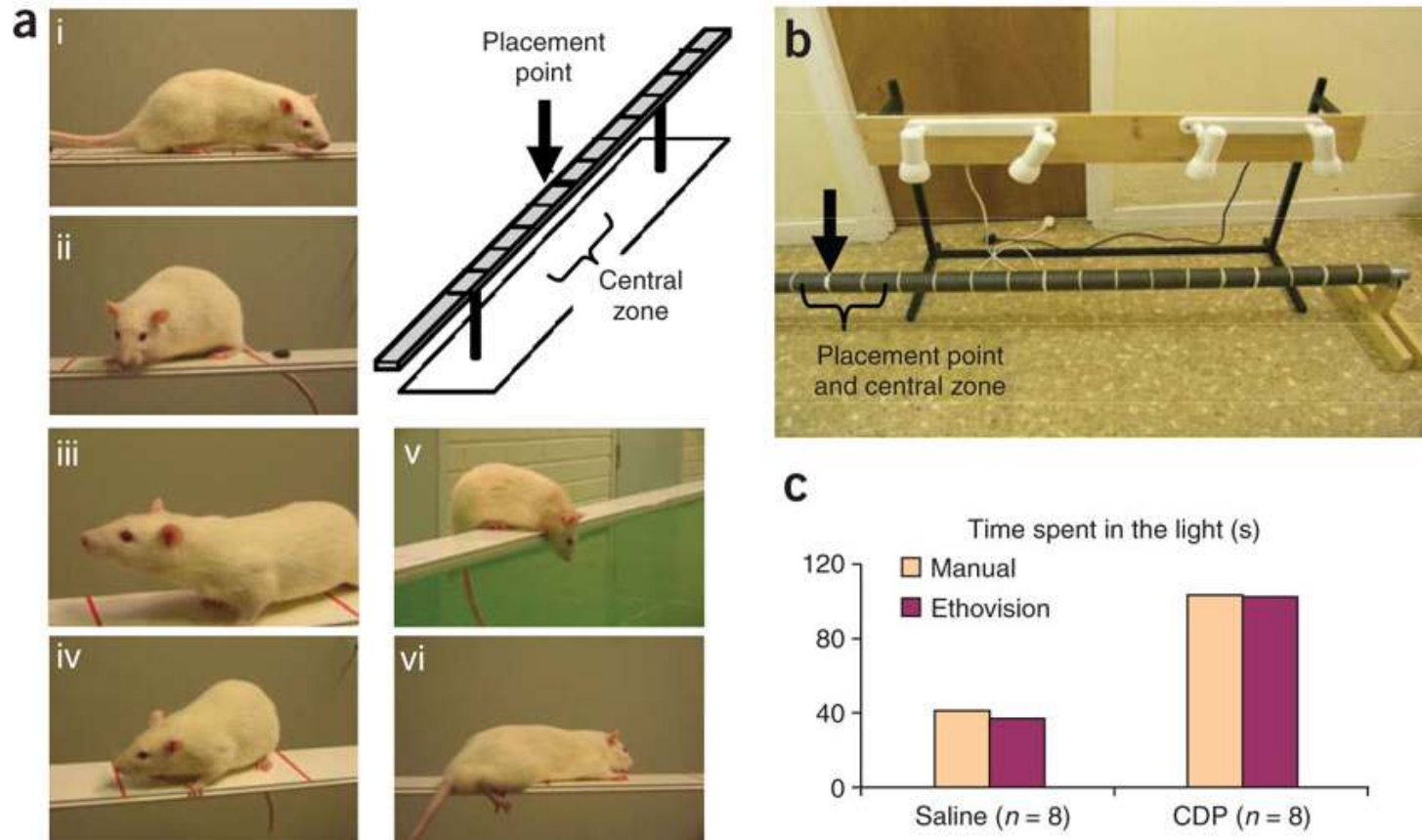


The rodent Suok (“ropewalking”) test

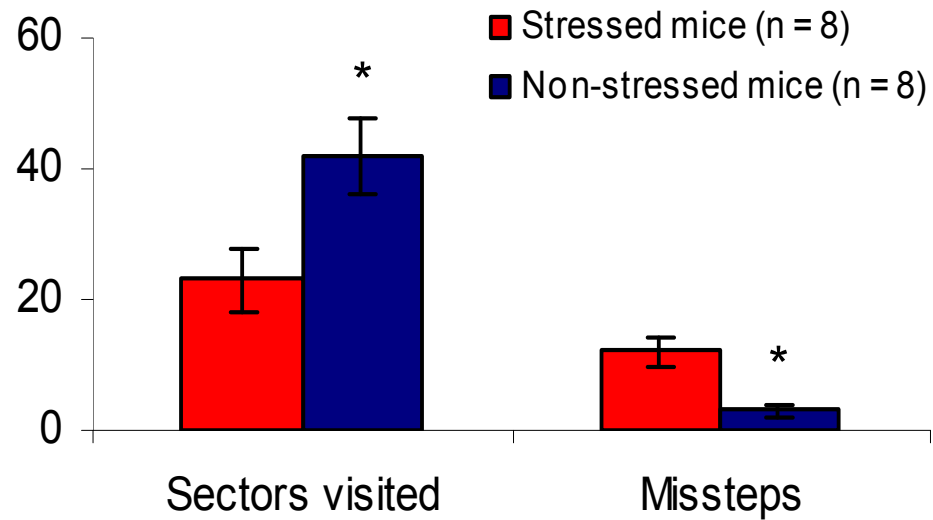
Kalueff et al., 2005



The Rat Suok test of anxiety and balancing

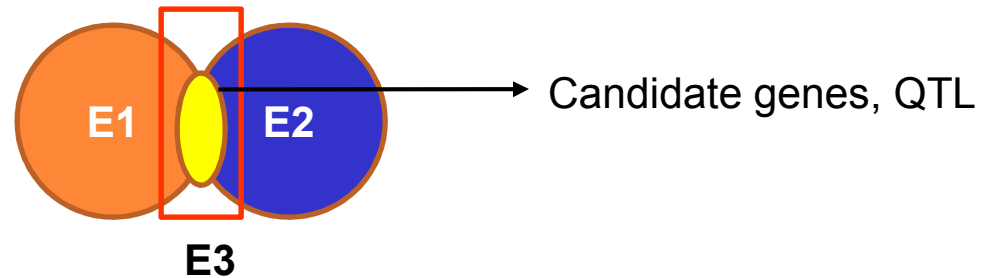


STRESS-EVOKED MOTORISENSORY DESINTEGRATION

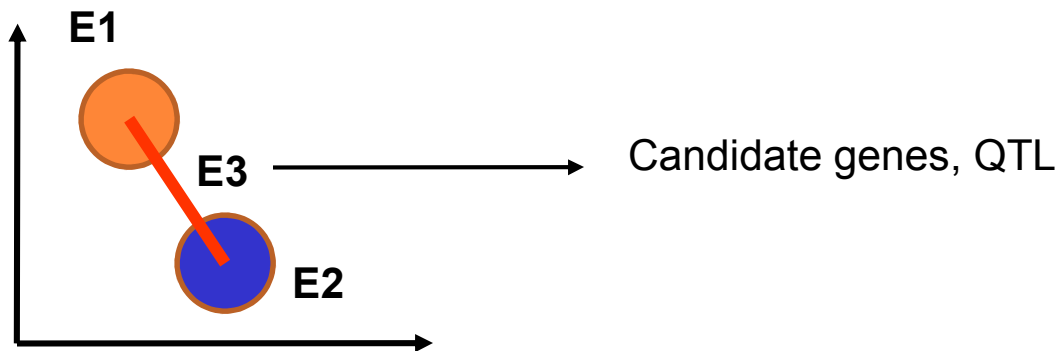


We need new endpoints

Model newly appreciated brain phenomena/endophenotypes (e.g., SEMD)
-> understand their genetics (candidate genes, QTL)

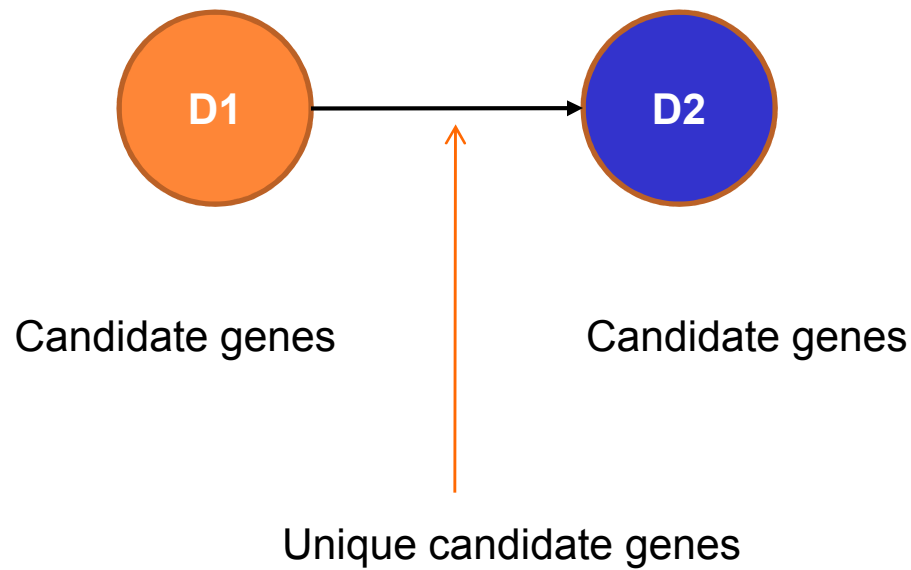


Create new in-silico endophenotypes of “higher order”
-> understand their genetics (candidate genes, QTL)



We need new endpoints

Model a transition from one disorder top another (e.g., anxiety-depression)
-> understand their genetics (candidate genes, QTL)

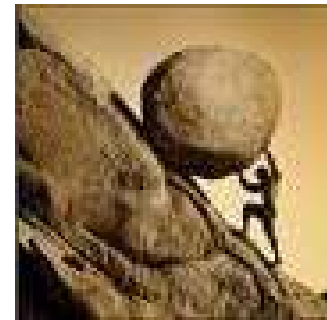


Kudryavtseva et al., 2001



Other interacting domains of interest for our lab

- Stress [anxiety, depression] and obesity
- PTSD and OCD
- Stress and cancer
- Stress and autism



COLLABORATION IS WELCOME!

WWW.KALUEFFLAB.COM

